

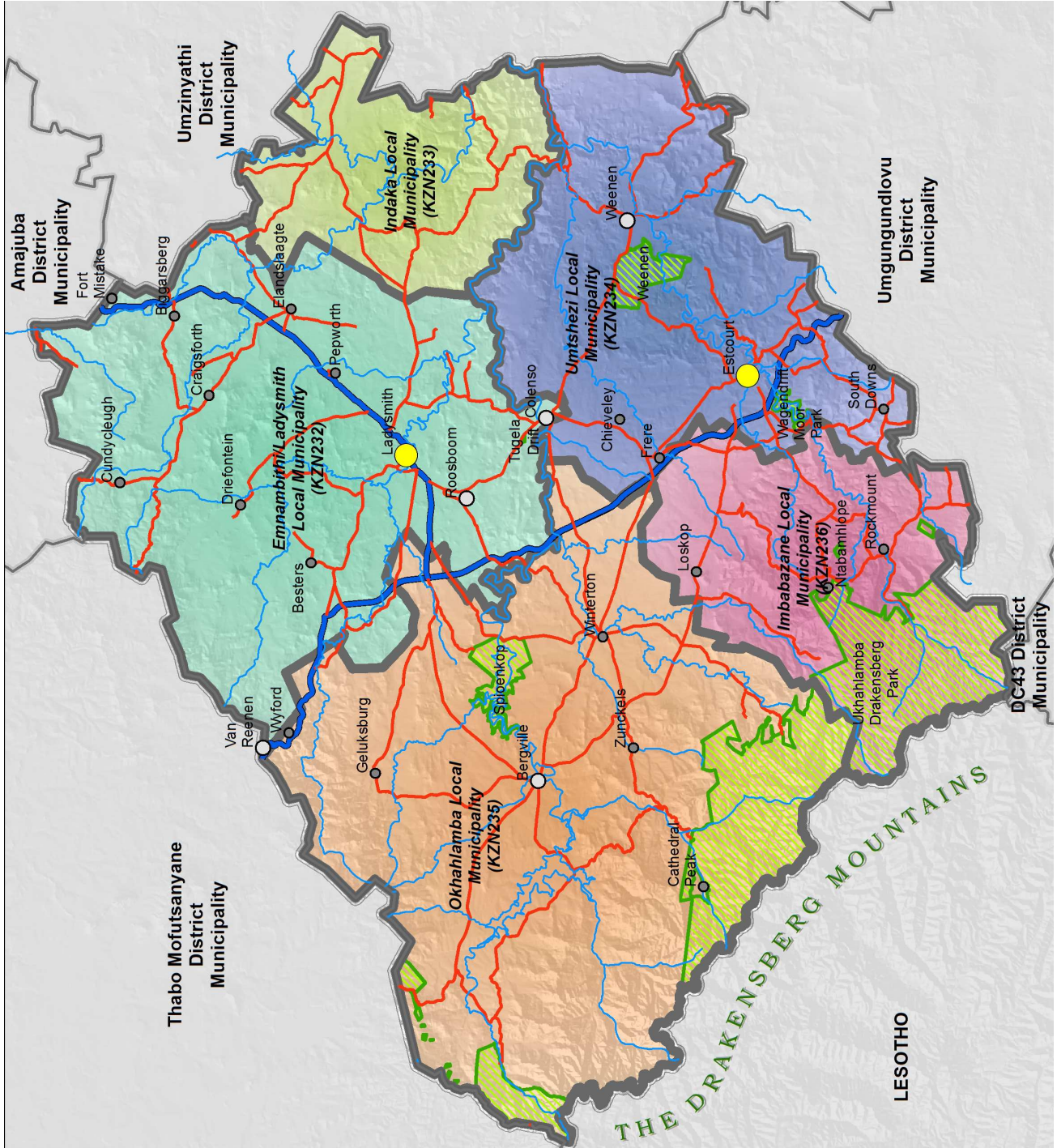


# ***ANNUAL REPORT***

## ***2010/2011***



# ***uThukela District Municipality***



# **uThukela District Municipality**

## ***uThukela District Municipality Vision:***

***An improved quality of life for all in a globally interconnected, stable and developed region.***

## ***uThukela District Municipality Mission:***

***To provide quality services and development in an efficient, effective, sustainable and cost effective manner.***

## ***Developmental Aspects:***

- ***Improved quality of life, which includes cost efficient delivery of services and equitable access to public facilities;***
- ***A stable environment, which refers to both natural and physical environments;***
- ***A developed region, which emphasises linked and systematically ordered projects; and***
- ***Sustainable development.***





## ***Mayoral Foreword***

It is with great pleasure to present the 2010-2011 Annual Report for the Uthukela District Municipality, as required in terms of section 121 of the Municipal Finance Management Act, No. 56 of 2003. Indeed, it is the first Annual Report tabled before the newly elected council. The 2010-2011 Financial Year was one of the most remarkable years in South African Local Government through a successful 2011 Local Government Elections. Furthermore, the success of 2011 Local Government Elections is justified by number of voters' turnout and significant political changes.

As the Mayor of Uthukela District Municipality which is composed of five local municipalities namely Emnambithi, Indaka, Umtshezi, Okhahlamba and Imbabazane. I have the privilege of observing our municipal employees performing various functions across the district's boundaries. We acknowledge challenges faced by our district municipality especially in water & sanitation backlogs and continuous interruptions. We further admit that to deal with such challenges, it's not a child's play; in simple terms it means we need to double up our efforts. We need not to constantly complain about the previous council they did what they have to, the rest has been inherited by us.

As first-responders to consistent water challenges and emergencies like disasters during this rainy season, as well as fulfilling the many responsibilities entitled to us in every hour of every day, all year long, we do it with passion and commitment to serve the interest of our diverse communities. While our duties or responsibilities vary in scope, the commitment of some the municipal employees remains stable despite some challenges.

This annual report provides insights into municipal work during the previous financial year. While the statistics provide an informative summary of what each department/section does, they do not adequately describe the



discrepancies and lack of dedication of some municipal employees, who often perform their duties without vigour whilst commending ones who perform their duties with requisite dedication.

Lastly, this report represents dedication of the council and administration. I have offered my deepest gratitude to all those municipal employees and councillors who showed their commitment to give excellent service to the people of Uthukela District Municipality and its “family” municipalities.

To provide quality services and development in an efficient, effective, sustainable and cost effective manner is our mission. Our District Municipality is affirming its commitment to service excellence.

I thank you

Cllr. Ms DCP Mazibuko

Mayor: uThukela District Municipality

**UTHUKELA**  
UMKHANDLU WESIFUNDA  
DISTRIKSMUNISIPALITEIT  
DISTRICT MUNICIPALITY



## ***Municipal Manager's Statement***

Financial 2010/2011 has been characterized by major changes in the political leadership of the municipality, this was the dawn of the new era where the possibility of changes were inevitable, and with every change it is known phenomena that people find at times difficult to adapt, despite this the municipality is heading for the right direction.

The political direction given to administration was a simple one, that is, a new culture of doing business has to change, this includes the emphases on enhanced communication with our clients, a broader stakeholders involvement, this was evident with the successful first Water and Sanitation Indaba, the plans to engage other municipalities within Inter- Government Relations, the signing of IGR protocols etc and emphases on fair consultation with staff who are the critical component in service delivery.

It is my belief that there is vast room for improvement, and on behalf of administration we promise to endeavor to making sure that our principals and clients are proud of our services.

Following are the reports by various Heads of Departments which will indicate where we still lacking as the Municipality and where we have succeeded as the Municipality, I will be failing in my duties if I do not haste to apologize for inconveniences caused by the constant bursts of our pipes, this is attributable to many factors which I believe all parties in governance need to join hands and find amicable resolve.

I wish to take this opportunity to thank councilors and staff for support rendered to my office.

Acting Municipal Manager





## Introduction and Overview

The uThukela District Municipality is one of 10 district municipalities within KwaZulu-Natal, with an area of 11,329.065 km<sup>2</sup>. It is located along the western boundary of KwaZulu-Natal, wedged between the boundaries of the Kingdom of Lesotho and the Free State Province. The district consists of five local municipalities and one District Management Area (DMA), namely:

- Emnambithi Local Municipality (KZ232)
- Indaka Local Municipality (KZ233)
- Umtshezi Local Municipality (KZ234)
- Okhahlamba Local Municipality (KZ235)
- Imbabazane Local Municipality (KZ236)
- District Management Area 23 (KZDMA23)

The uThukela District Municipality derives its name from one of the major provincial rivers, namely the Tugela River that rises from the Drakensberg Mountains and supplies water to a large portion of KwaZulu-Natal and Gauteng.

The uThukela District Municipality is predominantly rural, with approximately 75% of the population living on the rural landscape and the two newly demarcated local municipalities, Indaka and Imbabazane, having no formal towns and mainly comprising of traditional areas. The District is bisected by the N3 National Road, offering limited benefit to the people of the District. The economic hub of the District is the town of Ladysmith with the industrial areas of Danskraal and the Ithala Industrial Estate, as well as to a lesser extent, the town of Estcourt.

Located within the uThukela District Municipality is the Ukhahlamba Drakensberg World Heritage Site, which comprises mostly of the District Management Area, stretching 93958.22 hectares, or 8.3% of the area of the District. The main tourism hub is the Cathkin Park, which falls within the Cathkin Park Development Node, with a second development node located near the Royal Natal National Park, called the Babangibone Development Node. The towns of Bergville and Winterton are located within the vicinity of the Drakensberg and derive some benefits from the tourism industry. The town of Ladysmith is a significant historical tourism destination and offers a number of museums and historical sites.

The uThukela District Municipality has a population of 714,910 people (Community Survey 2007 - Stats SA), which calculates to a density of 63 people per square kilometre. The population is predominantly female, with 389,415 females and 325,495 males. The average annual household income is R23,419 and the annual income per capita is R3,046. The majority of the



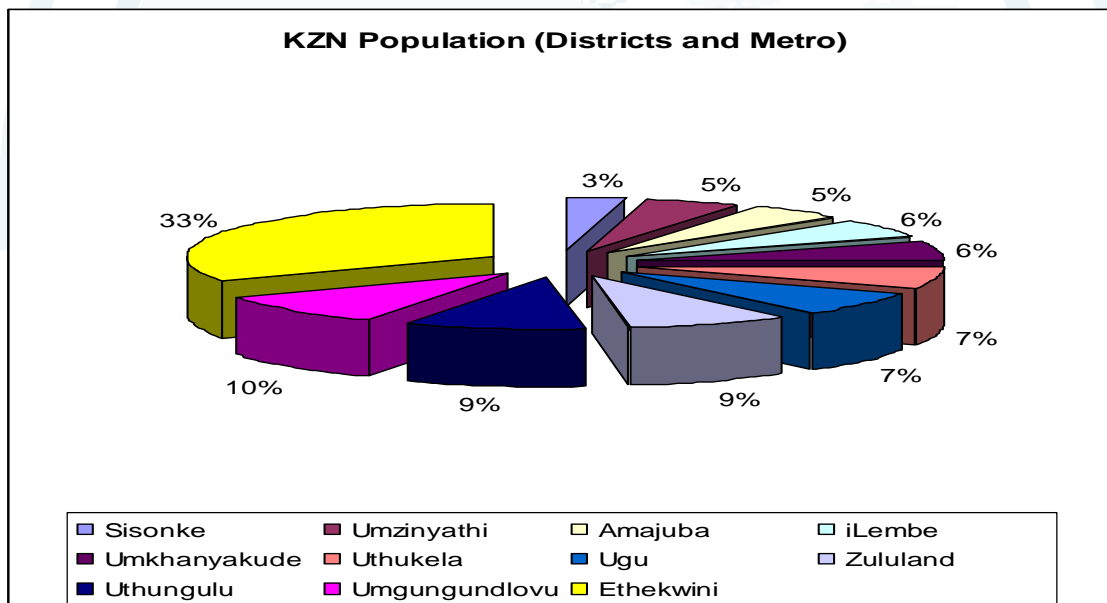
## Introduction and Overview

population within the uThukela District Municipality is African (95.40%), followed by Indian (3.25%), White (1.05%) and Coloured (0.31%). From the

| 1991/2007 EMPLOYMENT TABLE |                     |                       |                        |                          |                            |
|----------------------------|---------------------|-----------------------|------------------------|--------------------------|----------------------------|
|                            | Population Employed | Population Unemployed | Population Not Working | Absolute Employment Rate | Absolute Unemployment Rate |
| KwaZulu-Natal 1991         | 28%                 | 26%                   | 46%                    | 51.26%                   | 48.74%                     |
| uThukela DM 1991           | 20%                 | 29%                   | 51%                    | 41.22%                   | 58.78%                     |
| KwaZulu-Natal 2007         | 34%                 | 21%                   | 45%                    | 58.91%                   | 41.09%                     |
| uThukela DM 2007           | 30%                 | 17%                   | 53%                    | 59.13%                   | 40.87%                     |

400,921 economically active population, 120,415 (30%) is employed, 68,564 (17%) is unemployed and 211,942 (53%) is not working.

The following table compares the employment figures for the uThukela District Municipality with that of the KwaZulu-Natal Province.



The uThukela District Municipality has 7% of the total population of KwaZulu-Natal, which is slightly above the provincial average of 6.7% and compares in population size to the Ugu District Municipality. The figure below indicates the comparative population of the districts and metro within the province of KwaZulu-Natal.

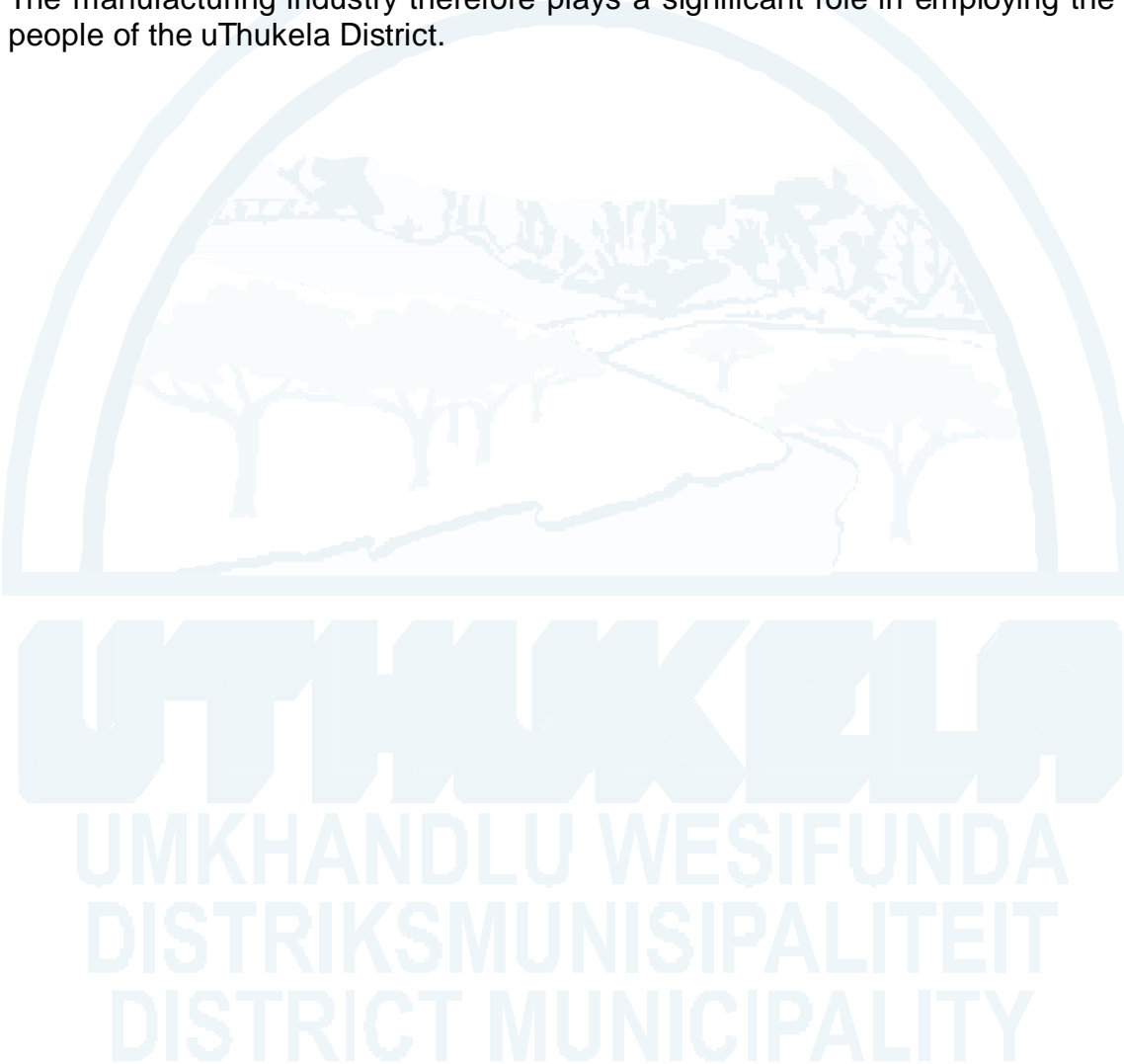




## ***Introduction and Overview***

The uThukela District has an annual average rainfall of over 1,000mm over most of its area and a mean maximum temperature of between 13.5 °C and 25.9 °C and a mean minimum temperature that varies between 3.7 °C and 12 °C. The temperature in the Indaka and Umtshezi municipal areas are higher than the rest, mainly as a result of their distance from the Drakensberg, that in general has a lower temperature.

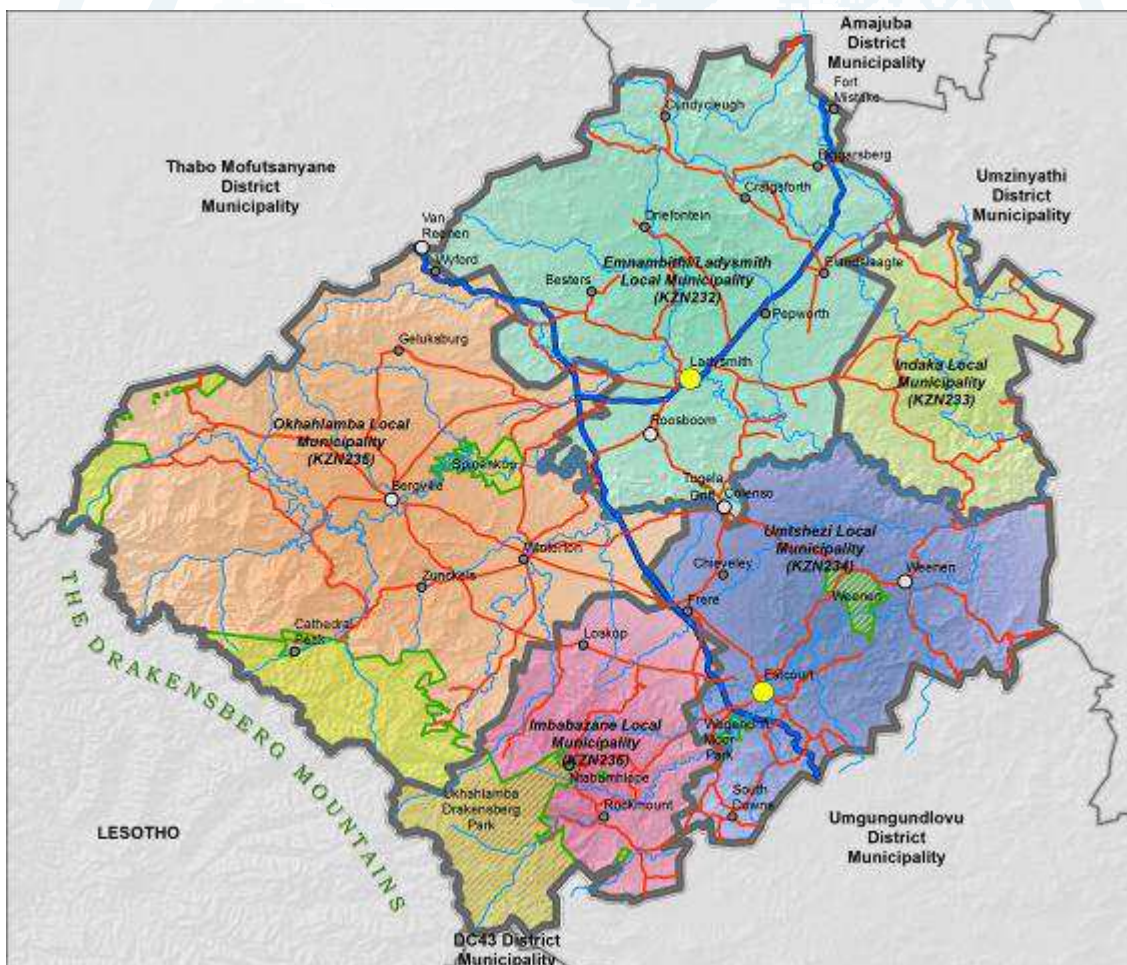
Employment is mainly in the manufacturing industry, followed by community/social services and the wholesale/retail sectors. Most people are employed in elementary positions, followed by plant/machine operators and craft and trade. The manufacturing industry therefore plays a significant role in employing the people of the uThukela District.



# Key Statistics

## uThukela District Municipality

- **Area:** 11,329.065 km<sup>2</sup> (1,132,906.5ha)
- **Population:** 714,910 / 139,638 households
- **Density:** 63 people/km<sup>2</sup>
- **Unemployment rate:** 40.87%
- **Local Municipalities:** 5
- **Local Authority Grade:** Category 4
- **Urban Rural split:** 25% urban 75% rural
- **Municipal Councillors:** 31
- **Traditional Authorities:** 18





## General Information

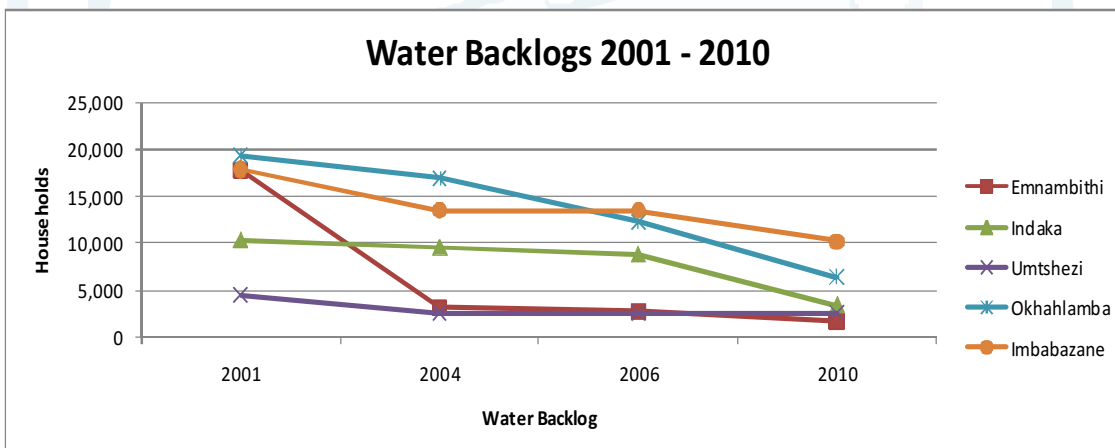
### Water and Sanitation Backlogs

The core function of the uThukela District Municipality is the provision of water and sanitation services. The following tables and graphs indicate the progress made in addressing the water and sanitation backlogs up to mid 2010 (Source: AB Projects):

### Water Backlogs

The following two tables indicate the eradication of the water backlog since 2001 until 2010 in the uThukela District Municipality.

| Local Municipality | Water Backlogs 2001 |           | Water backlogs 2004 |           | Water backlogs 2006 |           | Water backlogs 2010 |           |
|--------------------|---------------------|-----------|---------------------|-----------|---------------------|-----------|---------------------|-----------|
|                    | House-holds         | %         | House-holds         | %         | House-holds         | %         | House-holds         | %         |
| Emnambithi         | 17,718              | 13        | 3,104               | 2         | 2,750               | 2         | 1,713               | 1         |
| Indaka             | 10,324              | 8         | 9,556               | 7         | 8,807               | 7         | 3,390               | 2         |
| Umtshezi           | 4,469               | 4         | 2,520               | 2         | 2,520               | 2         | 2,520               | 2         |
| Okhahlamba         | 19,339              | 14        | 16,889              | 13        | 12,289              | 9         | 6,413               | 5         |
| Imbabazane         | 17,868              | 13        | 13,464              | 10        | 13,464              | 10        | 10,161              | 7         |
| DMA                | 37                  | 0         | 0                   | 0         | 0                   | 0         | 0                   | 0         |
| <b>Total DM</b>    | <b>69,755</b>       | <b>52</b> | <b>45,533</b>       | <b>34</b> | <b>39,830</b>       | <b>30</b> | <b>24,197</b>       | <b>17</b> |



### Sanitation Backlogs

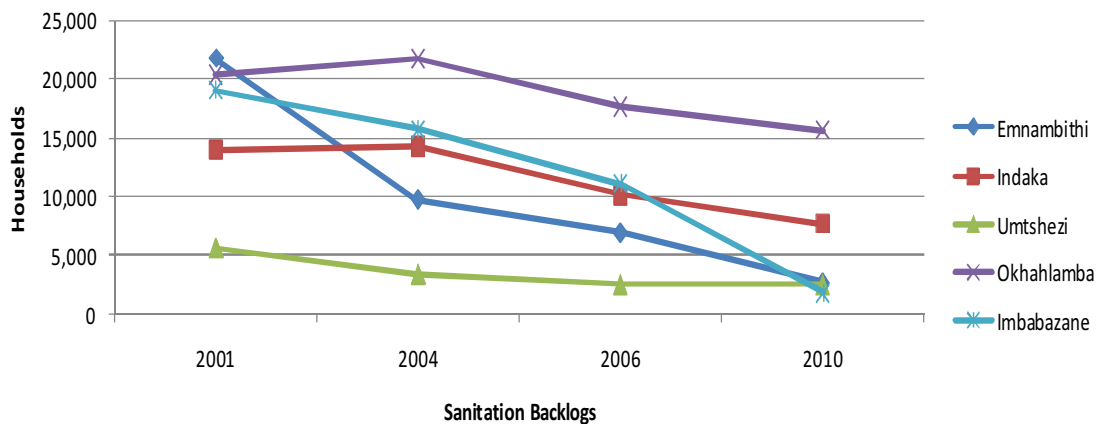
The following two tables indicate the eradication of the sanitation backlog since 2001 until 2010 in the uThukela District Municipality.



## General Information

| Local Municipality | Sanitation Backlogs 2001 |           | Sanitation backlogs 2004 |           | Sanitation backlogs 2006 |           | Sanitation backlogs 2010 |           |
|--------------------|--------------------------|-----------|--------------------------|-----------|--------------------------|-----------|--------------------------|-----------|
|                    | Households               | %         | Households               | %         | Households               | %         | Households               | %         |
| Emnambithi         | 21,743                   | 16        | 9,740                    | 7         | 6,908                    | 5         | 2,650                    | 2         |
| Indaka             | 13,958                   | 10        | 14,228                   | 11        | 10,137                   | 8         | 7,683                    | 5         |
| Umtshezi           | 5,616                    | 5         | 3,386                    | 3         | 2,520                    | 2         | 2,520                    | 2         |
| Okhahlamba         | 20,370                   | 15        | 21,707                   | 16        | 17,662                   | 13        | 15,661                   | 11        |
| Imbabazane         | 19,050                   | 14        | 15,714                   | 12        | 11,096                   | 8         | 1,783                    | 1         |
| DMA                | 10                       | 0         | 0                        | 0         | 0                        | 0         | 0                        | 0         |
| <b>Total DM</b>    | <b>80,747</b>            | <b>60</b> | <b>63,999</b>            | <b>47</b> | <b>48,323</b>            | <b>36</b> | <b>30,297</b>            | <b>21</b> |

Sanitation Backlogs 2001 - 2010



### 2007 Community Survey: Population per Local Municipality

| Municipality                                     | Wards           | Population     |                | Households     |                |
|--|-----------------|----------------|----------------|----------------|----------------|
|  |                 | 2001           | 2007           | 2001           | 2007           |
| Emnambithi/Ladysmith<br>2,964.822km <sup>2</sup> | 25              | 225,459        | 236,746        | 50,530         | 50,259         |
| Indaka<br>991.528km <sup>2</sup>                 | 10              | 113,644        | 101,555        | 21,372         | 21,081         |
| Umtshezi<br>2,130.288km <sup>2</sup>             | 7               | 59,921         | 83,906         | 13,093         | 15,231         |
| Imbabazane<br>827.349km <sup>2</sup>             | 12              | 119,925        | 140,747        | 23,030         | 24,559         |
| Okhahlamba<br>3,475.496km <sup>2</sup>           | 13              | 137,525        | 151,446        | 26,677         | 28,508         |
| KZDMA23<br>939.5852km <sup>2</sup>               |                 | 465            | 515            | 143            | 158            |
| <b>uThukela DM<br/>11,329.065km<sup>2</sup></b>  | <b>Total 67</b> | <b>656,939</b> | <b>714,915</b> | <b>134,845</b> | <b>139,638</b> |